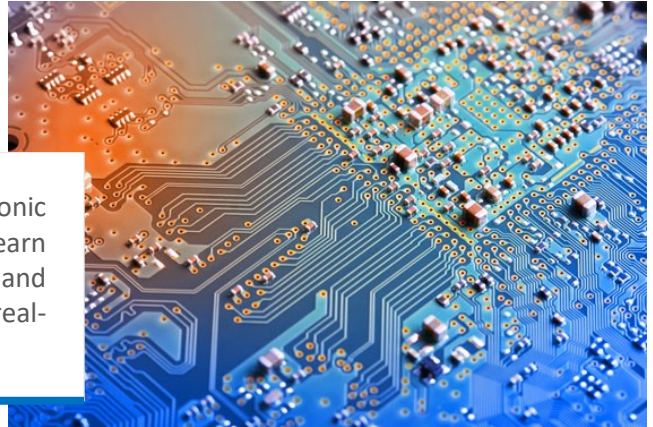


Embedded Electronic Systems (work-study)

The ENSEIRB-MATMECA Embedded Electronic Systems programme (SEE) allows students to learn about the latest electronics, computer science, and communications technologies for intelligent, real-time embedded systems of the future.



COURSES

1ST, 2ND AND 3RD YEARS

- Mathematics
- Analog electronics
- Digital electronics
- Physics
- Computer science
- Microprocessors
- Manufacturing technologies
- Digital systems
- Digital signal processing
- Operations and network systems
- Manufacturing a product
- Implementing embedded systems
- Monitoring tests and tools
- Embedded systems architecture
- System modelling
- Engineering culture
- Languages

In partnership with



Student testimonial

Work-study is the perfect solution for students who want to be independent and get started in the professional world right away. The Embedded Electronic Systems programme allows students to play an active role in the digital revolution.

We're prepared to take on the challenges of the coming decade, such as the Internet of Things or fifth-generation mobile communication technology. The programme also includes designing systems adapted for aeronautics or space industry, which many students are interested in.

Mathieu

EMPLOYMENT PROSPECTS:

1ST JOB

€40,420
gross
annual

Starting
salary
(Class of 2022)

6 out of 10
graduates
are employed 3
months after
leaving school



- Aeronautics, automotive and space industries
- Information technologies
- Others